



<https://go.gov.sg/aes-connect>

AES Alumni Connects

Pls scan the QR code and join us to keep you updated about our school happenings!



2024 GCE O-LEVEL EXAMINATION RESULTS RELEASE 11 JANUARY 2024

Assumption English School



Labor, Omnia, Vincit



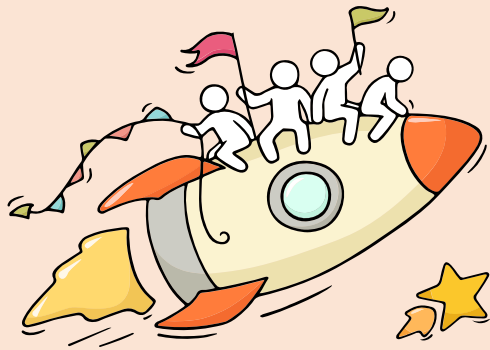
Welcome Back!

Briefing Slides for Release of 2023 GCE O-Level Results



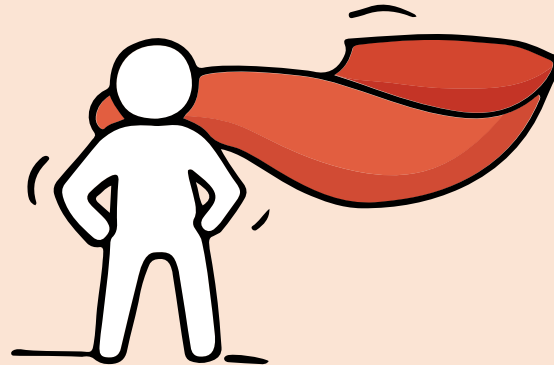
Dear students,

You have worked hard to reach this stage. Let's celebrate our efforts!





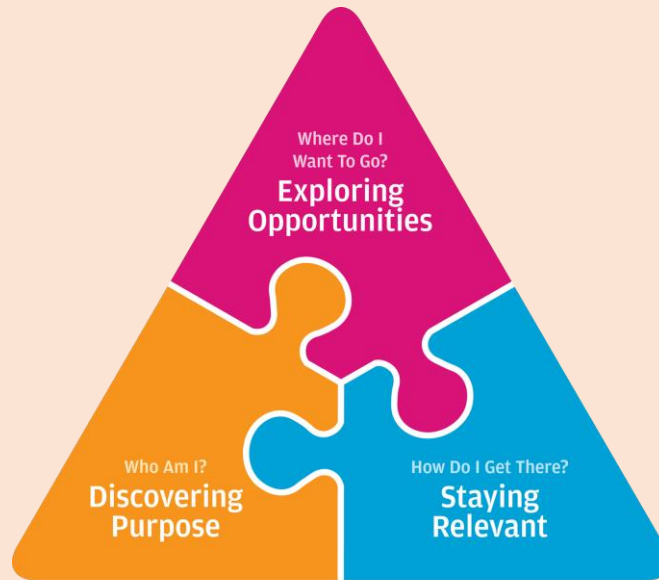
Remember that while **everyone's educational journey is different, we can each have a fulfilling outcome!**



Thinking about Your Next Step?

Consider these questions!

Where do I want to go?



Who am I?

How Do I Get There?

Resources to help you make informed decisions

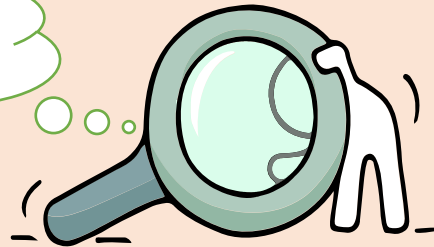


MySkillsFuture Student Portal

A one-stop portal that empowers you to embark on a journey of self-discovery and make informed education and career choices.

Use the information and tools to explore various education and career pathways and take charge of your future.

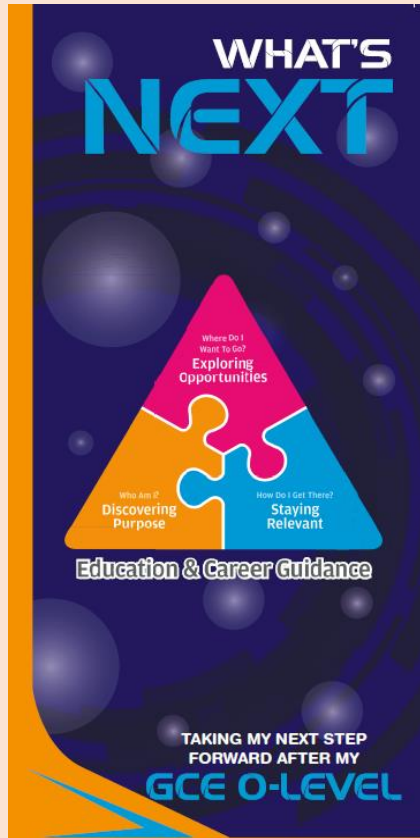
Where can we find more information?



<https://go.gov.sg/mySFse>
c



Resources to help you make informed decisions



<https://go.gov.sg/whats-next-olevel>

Resources to help you make informed decisions

Information on Post-Secondary Education

Learn more about the admissions exercises and programmes



<https://moe.gov.sg/post-secondary/admissions>

Learn more about the post-secondary education institutions



<https://moe.gov.sg/post-secondary/overview>

Resources to help you make informed decisions

Explore different jobs and industries with On My Way (OMW). Find out if your career goal and educational pathway match your interests, values and ambitions. <https://www.nyc.gov.sg/omw/home>



KNOW IT ALL

provides consolidated information about different jobs and industries - key responsibilities, skills, career paths and more!



A Day in the Life of a Food Technologist

DAY IN THE LIFE

takes you into the lives of different professionals and give you a glimpse of their jobs and what it entails through the medium of videos.

A micro-job taster experience by Bold At Work x Outward Bound Singapore

Where Outdoors is a Calling

Curious to sample an alternative career transforming lives and journeying alongside youths in the outdoors? Discover skills, roles, culture, career opportunities, and pathways within Outward Bound Singapore in this intentionally curated half-day session, before you decide if you'd like to commit to the Instruction Selection Process.

8 Nov 2023
8AM to 1 PM

Punggol Point Jetty
Singapore 828084
OB5 Camp 1, Pulau Ubin

Organized by:   



TASTER PROGRAMMES

are micro-experiences of different job roles that allow you to get a taste of working life and help you decide what to study to achieve your career aspirations!





Concerned About Your Next Step?

Stop

- Calm yourself down. Take a few deep breaths.

Think


- Think through the different options that are available for you. Keep things in perspective.
- Remember that the O-Level is one part of your life journey and not the destination.

Do

- Approach a trusted adult and seek his/her help. Have a conversation with this person about what would be best for you.
- Make a decision and take action based on your options.

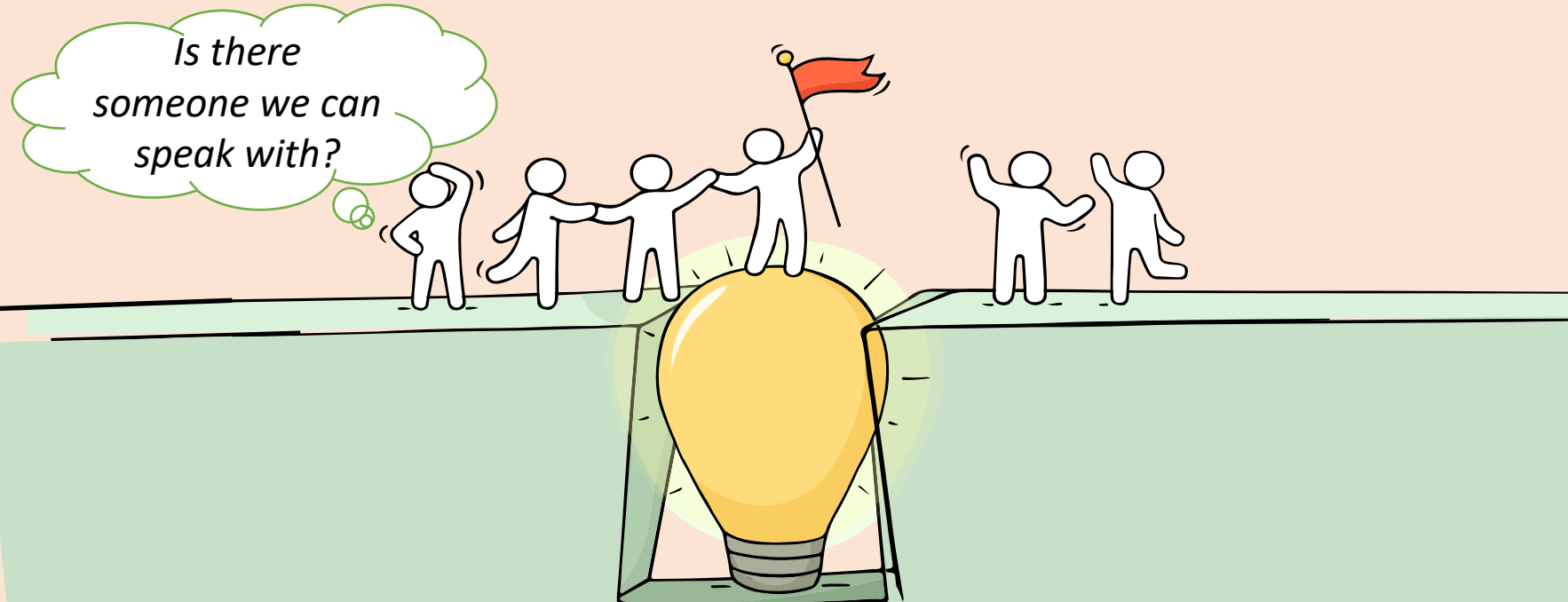
When you receive your results, you may experience a range of emotions.

Managing these emotions well will allow you to stay calm and make rational decisions.



Reaching out for help is a sign of strength, not weakness.

If you have any questions about your options or are not coping well, do reach out to someone you trust and speak with them. It could be a parent/guardian, teacher, ECG Counsellor, School Counsellor or a friend whom you can talk to.



*Is there
someone we can
speak with?*

Support is readily available for you.

Reach out to an ECG Counsellor!

Who can we go
to for ECG
advice?

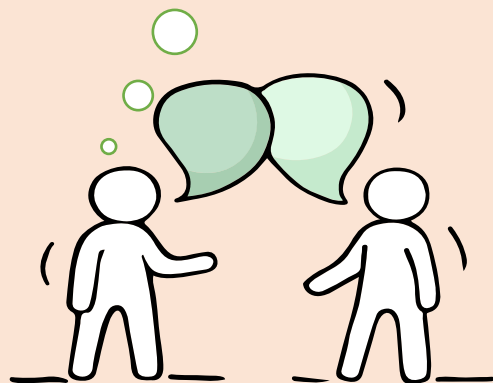
Make an appointment to speak
with your ECG Counsellor in school
at

<https://go.gov.sg/ecgbook-aes>

OR

Make an ECG counselling
appointment via the
ECG Centre @ MOE (Grange Road)
at

<https://go.gov.sg/moe-ecg-centre>



Keep a lookout for some of these signs in your peers or yourself.

How can we support one another?



D

Deliberately avoiding others

I

Increased irritability, restlessness, agitation, stress and anxiety

S

Sending or posting moody messages on social media

T

Talking about death or dying

R

Reacting differently or gradually losing interest in things they used to like

E

Eating more than usual or having a much reduced appetite

S

Sleep pattern changes with difficulty falling asleep or oversleeping

S

Slowing down of energy levels

If you notice any of these signs in yourself or your friends, **have a chat with your school counsellor or teacher**
Or contact SOS 24-hour hotline at **1-767** or **1800-221-4444**



Ministry of Education
Singapore

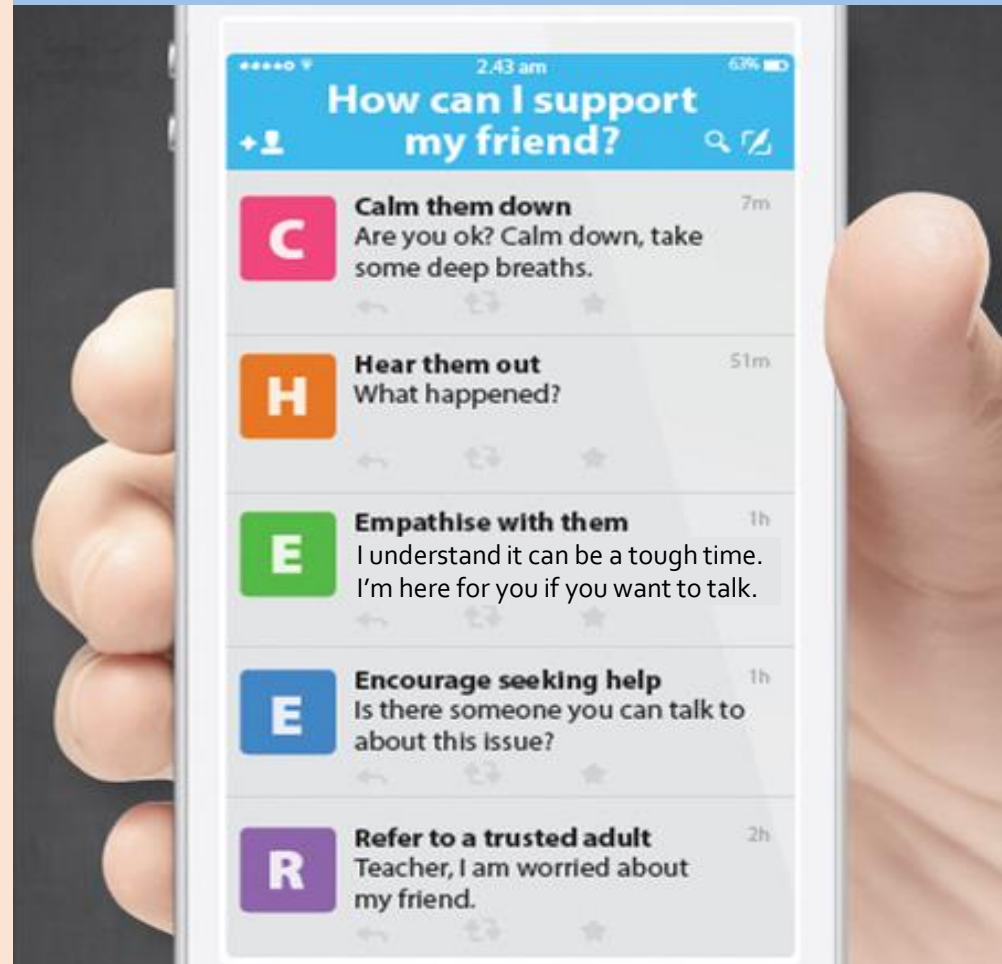
© 2021 Guidance Branch, Student Development Curriculum Division (SDCD), Ministry of Education, Singapore. No part of this final product may be reproduced or transmitted in any form or by any means, electronic or mechanical, including photocopy, recording or any other information storage and retrieval system, without written permission from SDCCD, MOE.

Supporting Your Friend

We may each experience different emotions upon receiving the results. You can share your friends' joy by congratulating them or give words of encouragement to friends who may be disappointed with their results.



Keep a lookout for your friends in distress. You can support them in the following ways:





There are other hotlines and chats available if you are more comfortable seeking help using these platforms. Scan the QR code below for a helpful resource.



SOS provides round-the-clock emotional support for those in distress, thinking of suicide or affected by suicide.

Call: **1767**
(24-hour helpline)

Whatsapp: **9151 1767**
(24-hour Care Text)

Community Health Assessment Team

(CHAT) provides personalised and confidential mental health checks and consultation for youths. To speak with a youth support worker, you can:

Visit: **CHAT Hub at *SCAPE, #05-05**
Call: **6493 6500/ 6501**
Email: **CHAT@mentalhealth.sg**

mindline.sg is an online platform that provides tools, tips and resources to help you manage your health and well-being. Find out more at:
www.mindline.sg



TOUCHline is a helpline to provide youths with emotional support and practical advice.

Call: **1800-377 2252**
*Monday- Friday (Excluding Public Holidays):
9am – 6pm*

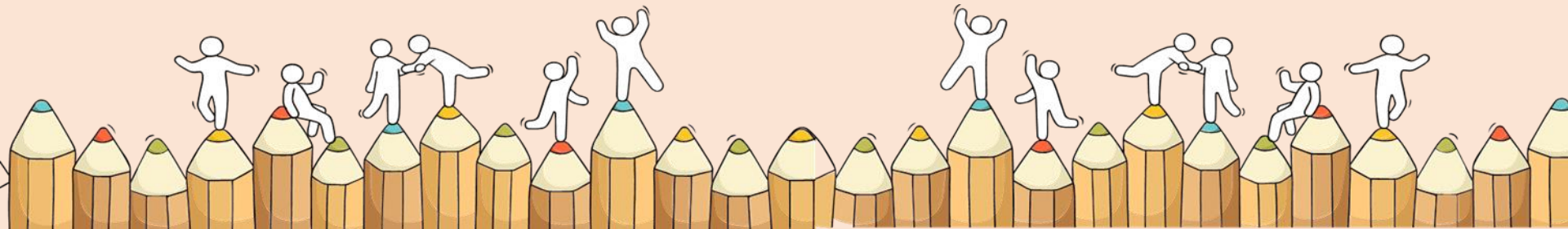
Carey is an online platform by Care Corner that provides free mental health check-ins with mental health professionals. Find out more at:
<https://carey.carecorner.org.sg/>

eC2 is an e-Counselling Centre where you can talk to a trained counsellor about the issues you are facing, right where you are.

Chat with a counsellor at:
www.ec2.sg
*Monday – Friday (Excluding Public Holidays):
10am – 12pm & 2pm – 5pm*

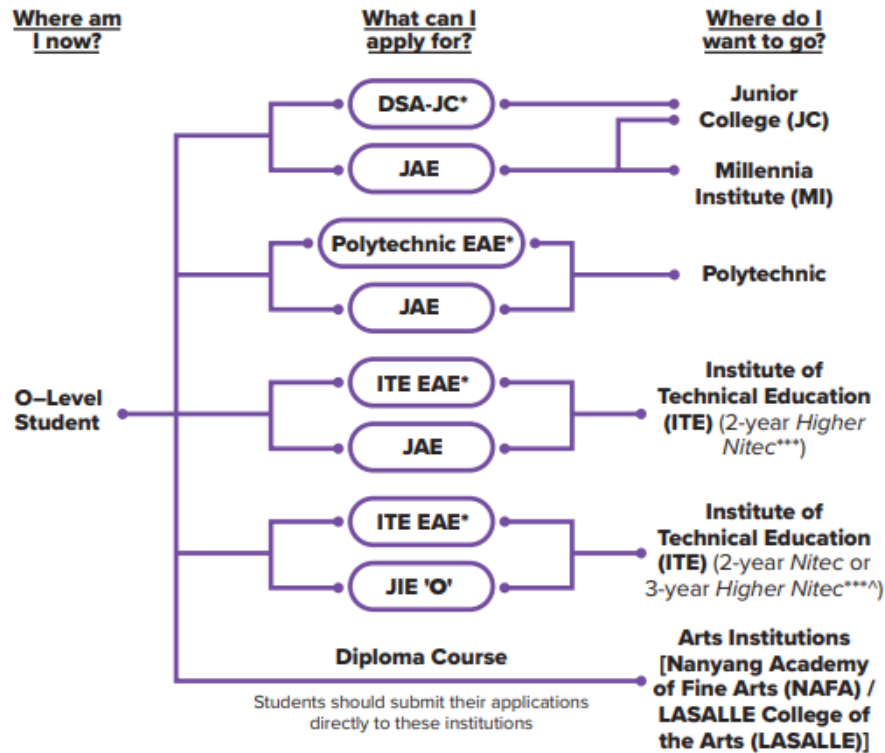
Admissions Exercises

Things to note





Admissions Exercises for O-Level Students



<https://www.moe.gov.sg/post-secondary/admissions>

*Students can apply through these admissions exercises before their O-Level examinations.

***Selected *Nitec* and *Higher Nitec* courses are available in traineeship mode. For more information on applying to these courses, you can visit

<https://ite.edu.sg/admissions/traineeship>.

^For the list of 3-year Higher Nitec courses, please visit <https://www.ite.edu.sg/courses/full-time-courses/nitec-and-3-year-higher-nitec>.

Source: A Guide to Post-Secondary Admissions Exercises

Details of Admissions Exercises



JAE – Joint Admissions Exercise

JAE enables GCE O-Level holders to apply for admissions to courses offered by JCs, MI, polytechnics and ITE 2-year *Higher Nitec*.



go.gov.sg/applyjae



JIE 'O' – Joint Intake Exercise 'O'

The JIE 'O' is conducted to enable GCE O-Level holders to apply for the 2-year *Nitec* or 3-year *Higher Nitec* courses conducted by ITE.



go.gov.sg/applyjie

Details of Admissions Exercises



Arts Institutions – NAFA/ LASALLE

GCE O-Level holders with the aptitude and interest to pursue the creative arts at the tertiary level may apply for diploma programmes at the Arts Institutions (AIs). Each AI runs its own admissions exercise, and interested students should apply directly to the institution.



go.gov.sg/nafa-applynow



go.gov.sg/laselle-applynow

Important Dates to take note

Joint Admissions Exercise (JAE)

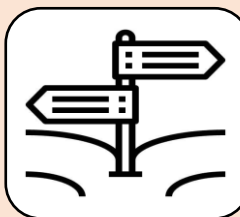
Key Activity	Dates	Remarks
Application	Thursday, 11 January 2024, 4 pm to Tuesday, 16 January 2024, 4pm	Deadline: Tuesday, 16 January 2024, 4pm
Release of Posting Results	Thursday, 1 February 2024, 4 pm	
Appeals	From 1 February 2024 onwards	To appeal for a place in a JC or MI, approach the school of your choice directly. To appeal for a place in a polytechnic or the ITE, apply on JAE Online Appeal Portal.

Note: Students who have been successfully admitted via DSA-JC and EAE would NOT be eligible to take part in the JAE

What should you consider when applying in JAE?



- **What am I good at? Are there areas that I am interested in?**
 - Think about type of courses you have strengths and are interested in
 - For example, you may be interested in engineering, healthcare or design courses



- **Where should I go?**
 - **List down all the institutions that offer courses that are aligned to your interests**
 - For example, if you are interested in design, you could list down the design courses offered by the polytechnics, such as the Diploma in Animation, offered by NP or Diploma in Sonic Arts, offered by RP. You can also consider courses offered by ITE such as the Higher Nitec in Interactive Design or the Higher Nitec in Visual Effects.



- **Which courses should I choose?**
 - **Use all your 12 JAE choices carefully**
 - Refer to the polytechnic and ITE websites to find out more
 - For polytechnic courses: www.polytechnic.edu.sg
 - For ITE Higher Nitec courses: www.ite.edu.sg

Joint Admissions Exercise (JAE)

Utilise all your 12 choices well

SCENARIO: STUDENT WITH A NET AGGREGATE SCORE OF 13

Use previous year's L1R5 / ELR2B2 as guide on all 12 choices

Passion:
Most interested in

1 st	Course A	11
2 nd	Course B	11
3 rd	Course C	12
4 th	Course D	12

Your net score may be poorer than JAE score

Practical:
Interested & stand a good chance

5 th	Course E	13
6 th	Course F	13
7 th	Course G	14
8 th	Course H	15

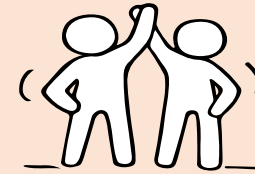
Your net score is close to JAE score


Prudent:
Confident

9 th	Course I	15
10 th	Course J	16
11 th	Course K	17
12 th	Course L	17

Your net score is better than JAE score

Other Information





2024 Open House Dates for JCs, Polytechnics & Arts Institutions

A Levels	Open House dates	Time	Links
Anderson Serangoon JC	12 Jan	10am - 5pm	https://www.asrjc.moe.edu.sg/open-house-2024/welcome/
Anglo-Chinese JC	10 Jan	12pm - 5pm	https://www.acjc.moe.edu.sg/events/open-house/
Catholic JC	12 Jan	10am - 4pm	CJC OPEN HOUSE 2024
Dunman High School	13 Jan	9am - 1pm	
Eunioia JC	12 Jan	9am - 4pm	https://www.eunoiadc.moe.edu.sg/oh/
Hwa Chong Institution	15 Jan	12pm - 4pm	https://hc-oh.com/
Jurong Pioneer JC	12 Jan	9am - 4pm	https://www.jpjc.moe.edu.sg/about-jpjc/open-house-2024/
Millenia Institute (3-year programme)	12 Jan	12pm - 5pm	https://www.millenniainstitute.moe.edu.sg/openhouse2024/
Nanyang JC	12 Jan	9am - 3pm	https://apps.nyjc.edu.sg/openhouse2024/
National JC	12 Jan	9am - 2pm	https://nationaljc.moe.edu.sg/
Raffles Institution	12 Jan	10am - 2.30pm	https://www.ri-open-house-2024.com/
River Valley High School	12 Jan	9am - 12pm	https://www.rivervalleyhigh.moe.edu.sg/
St Andrew's JC	12 Jan	9am - 4pm	https://www.standrewsjc.moe.edu.sg/oh2024/
Tampines Meridian JC	12 Jan	TBC	https://tmjc.moe.edu.sg/
Temasek JC	12 Jan	10am - 2pm	https://www.temasekjc.moe.edu.sg/
Victoria JC	13 Jan	9am - 1pm	https://victoriajc.moe.edu.sg/
Yishun Innova JC	12 Jan	10am - 5pm	https://www.yijc.moe.edu.sg/

international Baccalaureate		Open House dates	Time	Links
Anglo-Chinese School (Independent)		12 Jan (JAE briefing session)	10am - 11.30am	https://www.acsindp.moe.edu.sg/announcement/announcements/jae2024/
St Joseph's Institution		13 Jan	9am - 11.30am	https://www.sji.edu.sg/news-and-events/announcements/2024/
Polytechnics	Open House dates	Time	Links	
Nanyang Polytechnic	4 - 6 Jan	10am - 6pm 12pm - 10pm (5 Jan)	https://openhouse.nyp.edu.sg/	
Ngee Ann Polytechnic	4 - 6 Jan	10am - 6pm	https://www.np.edu.sg/openhouse	
Republic Polytechnic	4 - 6 Jan	10am - 6pm (4 & 5 Jan) 9.30am - 6pm (6 Jan)	https://www.rp.edu.sg/discover/openhouse	
Singapore Polytechnic	4 - 6 Jan	10am - 6pm	https://www.sp.edu.sg/openhouse	
Temasek Polytechnic	4 - 6 Jan	10am - 6pm (till 8pm on 5 Jan)	https://www.tp.edu.sg/openhouse/index.html	
Arts Colleges	Open House Dates	Time	Links	
LASALLE College of the Arts	19 - 20 Jan	1pm - 6pm (19 Jan) 11am - 5pm (20 Jan)	https://www.lasalle.edu.sg/experience/open-house-info-days/openhouse	
Nanyang Academy of Fine Arts (NAFA)	19 - 20 Jan	11am - 5pm	https://enrol.nafa.edu.sg/openhouse	

Language Elective Programme (LEP) Briefing Sessions

A PRESENTATION BY
MINISTRY OF EDUCATION, SINGAPORE



Chinese Language Elective Programme

LEP	Date	LEP School	Time of LEP Briefing and Venue	Name and Email Address of Teacher-in-charge
CLEP	13 Jan 2024 (Sat)	Dunman High School	11:45am – 12:30pm BSP Room (F2 Level 1 德馨阁)	Mdm Hong Lan hong.lan@dhs.edu.sg
	15 Jan 2024 (Mon)	Hwa Chong Institution (College)	3.00pm – 3.30pm LT3 (College)	Ms Yeo Tan Ching yeotc@hci.edu.sg
	12 Jan 2024 (Fri)	Jurong Pioneer Junior College	2.30pm – 3.30pm CLEP Room 1	Mrs Tan-Lim Soh Whee tan-lim_soh_whee@moe.edu.sg
	12 Jan 2024 (Fri)	Nanyang Junior College	11.00am – 12.00pm CLEP Room	Mdm Tan Choon Yan tan_choon_yan@moe.edu.sg
	12 Jan 2024 (Fri)	Temasek Junior College	11.30am – 12.10pm/ 1.00pm – 1.40pm CLEP Room	Ms Hao Deyi hao_deyi@moe.edu.sg

Malay Language Elective Programme

LEP	Date	LEP School	Time of LEP Briefing and Venue	Name and Email Address of Teacher-in-charge
MLEP	12 Jan 2024 (Fri)	Jurong Pioneer Junior College	2:30pm – 3.30pm MLEP Room, Level 4	Mdm Siti Atiqah Punari siti_atiqah_punari@moe.edu.sg
	12 Jan 2024 (Fri)	National Junior College	9.00am – 1.30pm MLEP Booth, TA12@Linden Block (known as TA classroom block)	Ms Iryianna Ahmad iryianna_ahmad@moe.edu.sg
	12 Jan 2024 (Fri)	Raffles Institution	10.00am – 2.30pm MLEP Room, Blk H, Level 1	Mr Ali Hanifiah hanifiah.a@ri.edu.sg
	12 Jan 2024 (Fri)	Tampines Meridian Junior College	10.30am – 3.30pm Informational Subject Booth	Mdm Faten Hana Bte Mustafa faten_hana_mustafa@schools.gov.sg
	12 Jan 2024 (Fri)	Yishun Innova Junior College	10.00am – 5.00pm MLEP Booth, Library	Mdm Najmah Bte Sidik najmah_sidik@schools.gov.sg

Tamil Language Elective Programme

LEP	Date	LEP School	Time of LEP Briefing and Venue	Name and Email Address of Teacher-in-charge
TLEP	12 Jan 2024 (Fri)	Anderson Serangoon Junior College	12.00pm – 2.00pm TLEP Room (Block C, Level 1, Room 1)	Dr Veeramuthu Ganesan veeramuthu_ganesan@schools.gov.sg Mdm Kamalavani Palaiyan kamalavani_palaiyan@schools.gov.sg
	12 Jan 2024 (Fri)	National Junior College	9.00am – 1.30pm Room TA12	Mr Shahul Hameed s/o Mohamed Maideen shah_mohamed@schools.gov.sg

GCE O Levels Examination 2023

Administrative briefing



JAE Instructions

- All applications must be submitted online through JAE Internet System (JAE-IS) from **4.00 pm on 11 January 2024 (Thursday) to 4.00 pm on 16 January 2024 (Tuesday)**.
- Students would have **received an email to inform them of their JAE eligibility**. If the student is eligible, the same email will include **Form A** which contains gross aggregate scores for JC, MI, polytechnic and ITE aggregate types, and the JAE courses that they are eligible to apply.
- If student eligible for JAE **does not receive the email containing their Form A**, they should log in to the JAE Internet System (JAE-IS) using **Singpass** to download their Form A during the JAE application period **after 4.00 pm today.**
- Students who are **unable to log in to the JAE-IS** to retrieve their Form A should **inform their form teachers by 12 January 2024.**



Website to access JAE-IS:
<https://www.moe.gov.sg/post-secondary/admissions/jae>

JAE Instructions

- Students who need to assess through school computers will need to approach the General Office within the same time-frame.
- Students who are unable to submit their choices via the **JAE-IS** **should not** visit MOE Customer Service Centre in person. Instead, they can **seek assistance using the online JAE Request Form** found at www.moe.gov.sg/jaerequestform.



JAE Instructions

- All students successfully admitted to a school through the Direct School Admission-JC (DSA-JC) Exercise / Polytechnic Early Admissions Exercise (Poly EAE) / ITE Early Admissions Exercise (ITE EAE) will not be able to participate in the JAE.
- Successful DSA-JC and Poly EAE students will receive their Form A that indicate the school they have been admitted to.
- Successful ITE EAE students will be informed by ITE.



JAE Instructions

- You are advised to **exercise all 12 options** in JAE.
- You are advised to **print and retain a copy of the Verification slip** for your record after you have submitted your application online.
- JAE: www.moe.gov.sg/jae
- JAE Booklet: www.moe.gov.sg/jaebooklet
- The posting results of the JAE application are scheduled for release on **Thursday, 1 February 2024**

Administrative Matters

- Candidates who wish to review their GCE 'O' Level Examination results must submit their appeals to the school by **Tuesday, 16 January 2024, 12:00 noon.**
- The appeal fee per individual will be **\$114.45.**



Other administrative matters

- Candidates who wish to made amendments to their certificates must submit their request to the school by **Tuesday, 16 January 2024, 12:00 noon.**
- The amendment fee per certificate will be **\$50.**



Administrative Matters

Financial assistance for Polytechnic and ITE education

- Several assistance schemes are available:
 - CDC/CCC Bursary
 - MOE Bursary
 - Tuition Fee, Study Loan Scheme



Administrative Matters

Polytechnic Foundation Programme (PFP)

- 4NA students who are eligible for the PFP will receive a copy of Form P. Please approach Mr Kenny Sng at the back of the seminar room.
- Students eligible for the PFP can apply from **11 January (2 pm) to 16 January 2024 (4 pm)**.
- For more information on the PFP, students may visit the PFP website:
https://pfp.polytechnic.edu.sg/PFP/pfp_application.html

Administrative Matters

If you have any doubts or concerns, feel free to approach any of your FTs / School Counsellors.



ALL THE BEST FOR
YOUR RESULTS!

LABOR OMNIA VINCIT

