

2023 GCE N LEVEL EXAMINATION RESULTS RELEASE 18 DECEMBER 2023

Assumption English School



Labor, Omnia, Vincit



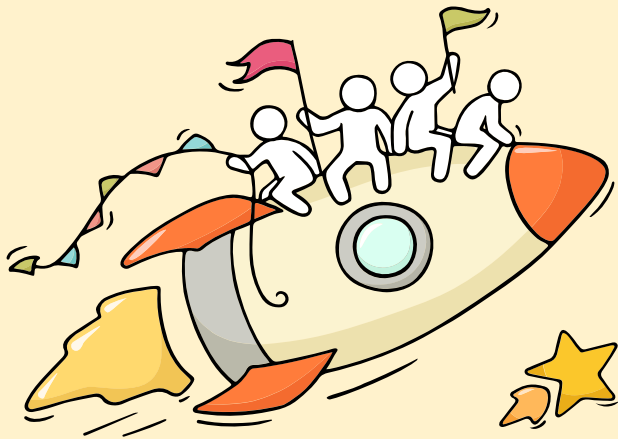
Welcome Back!

Briefing Slides for Release of 2023 N-Level Results



Dear students,

You have worked hard to reach this stage. Let's celebrate your efforts!

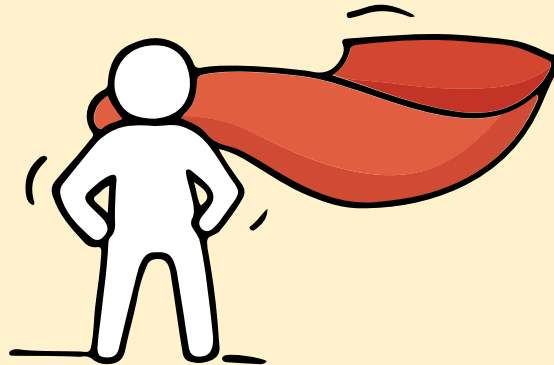


Finally, we are going to get our results!





Remember that while **everyone's educational journey is different, we can each have a fulfilling outcome!**



Thinking about Your Next Step?

Consider these questions!

Where do I want to go?

Who am I?



How Do I Get There?

Resources to help you make informed decisions



MySkillsFuture Student Portal

A one-stop portal that empowers you to embark on a journey of self-discovery and make informed education and career choices.

Use the information and tools to explore various education and career pathways and take charge of your future.

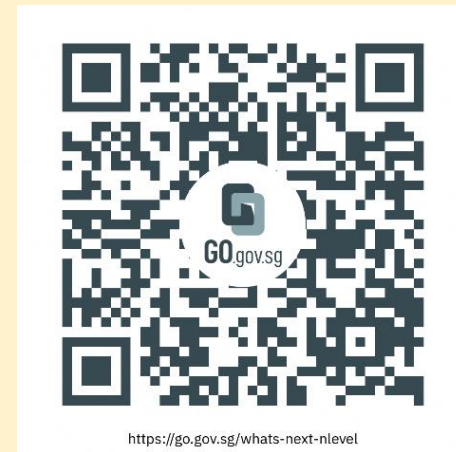
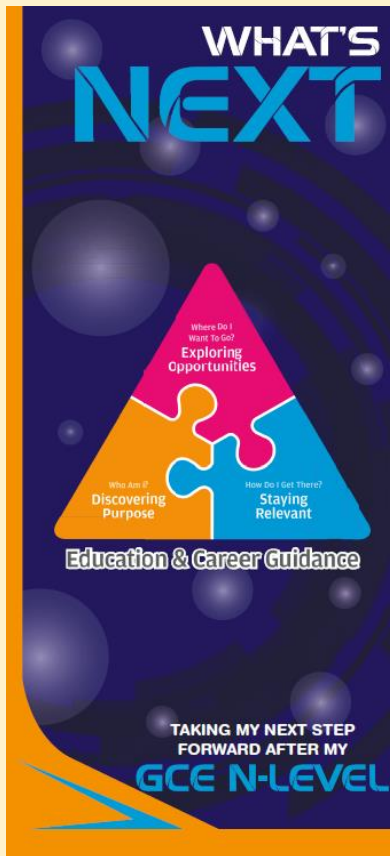
Where can we find more information?



<https://go.gov.sg/mySFsec>



Resources to help you make informed decisions



<https://go.gov.sg/whats-next-nlevel>

Resources to help you make informed decisions

Post-Secondary Education

Learn more about the admissions exercises and programmes



<https://moe.gov.sg/post-secondary/admissions>

Learn more about the post-secondary education institutions



<https://moe.gov.sg/post-secondary/overview>

Resources to help you make informed decisions

Explore different jobs and industries with On My Way (OMW). Find out if your career goal and educational pathway match your interests, values and ambitions. <https://www.nyc.gov.sg/omw/home>



KNOW IT ALL

provides consolidated information about different jobs and industries - key responsibilities, skills, career paths and more!



A Day in the Life of a Food Technologist

DAY IN THE LIFE

takes you into the lives of different professionals and give you a glimpse of their jobs and what it entails through the medium of videos.

A micro-job taster experience by Bold At Work x Outward Bound Singapore

Where Outdoors is a Calling

Curious to sample an alternative career transforming lives and journeying alongside youths in the outdoors? Discover skills, roles, culture, career opportunities and pathways within Outward Bound Singapore in this intentionally curated half-day session, before you decide if you'd like to commit to the Instruction Selection Process.

8 Nov 2023
8AM to 1 PM

Punggol Point Jetty
Singapore 828084
OBIS Camp 1, Pulau Ubin

Organized by:  Outward Bound Singapore

In partnership with:  NYC








TASTER PROGRAMMES

are micro-experiences of different job roles that allow you to get a taste of working life and help you decide what to study to achieve your career aspirations!



Consolidated list of Resources

Website	Link and QR Code
Admissions exercises and programmes: Learn more about the admissions exercises and programmes	https://moe.gov.sg/post-secondary/admissions 
Overview of Post-Secondary Education Institutions (PSEI): Learn more about the post-secondary education institutions	https://moe.gov.sg/post-secondary/overview 
Taking My Next Step Forward After GCE N-Level	https://go.gov.sg/whats-next-nlevel 
My SkillsFuture Portal	https://go.gov.sg/mySFsec 
On My Way: Information on Jobs and Industries	https://go.gov.sg/omw-moerrp2023 



Concerned about your next steps?

Stop

- Calm yourself down. Take a few deep breaths.

Think

- Think through the different options that are available for you. Keep things in perspective.
- Remember that the N-Level is one part of your life journey and not the destination.

Do

- Approach a trusted adult and seek his/her help. Have a conversation with this person about what would be best for you.
- Make a decision and take action based on your options.

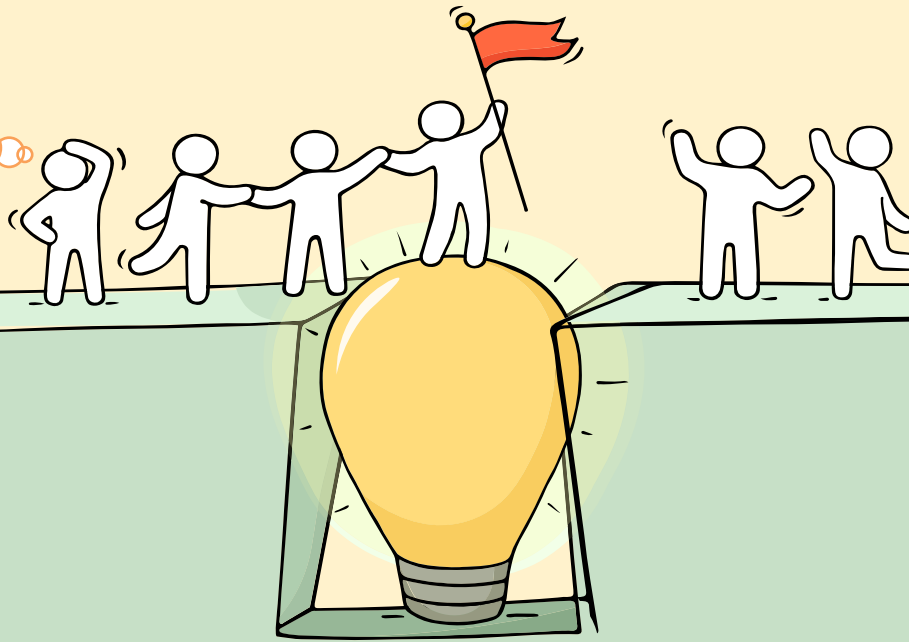
When you receive your results, you may experience a range of emotions.

Managing these emotions well will allow you to stay calm and make rational decisions.

Reaching out for help is a sign of strength, not weakness.

If you have any questions about your options or are not coping well, do reach out to someone you trust and speak with them. It could be a parent/guardian, teacher, ECG Counsellor, School Counsellor or a friend that you can talk to.

*Is there
someone we
can speak
with?*



Support is readily available for you.

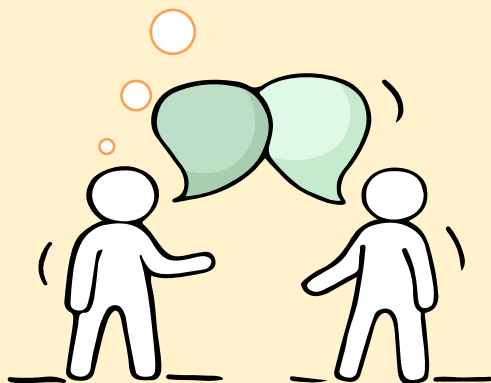
Reach out to an ECG Counsellor!

Who can we go to for ECG advice?

Make an appointment to speak with your ECG Counsellor in school through <https://go.gov.sg/ecgbook-aes>



Make an online or phone counselling appointment with the ECG Centre @ MOE (Grange Road) through <https://go.gov.sg/moe-ecg-centre>





Keep a lookout for some of these signs in your peers or in yourself

How can we support one another?



D
I
S
T
R
E
S
S

- Deliberately avoiding others
- Increased irritability, restlessness, agitation, stress and anxiety
- Sending or posting moody messages on social media
- Talking about death or dying
- Reacting differently or gradually losing interest in things they used to like
- Eating more than usual or having a much reduced appetite
- Sleep pattern changes with difficulty falling asleep or oversleeping
- Slowing down of energy levels

If you notice any of these signs in yourself or your friends, **have a chat with your school counsellor or teacher**
Or contact SOS 24-hour hotline at **1-767** or **1800-221-4444**

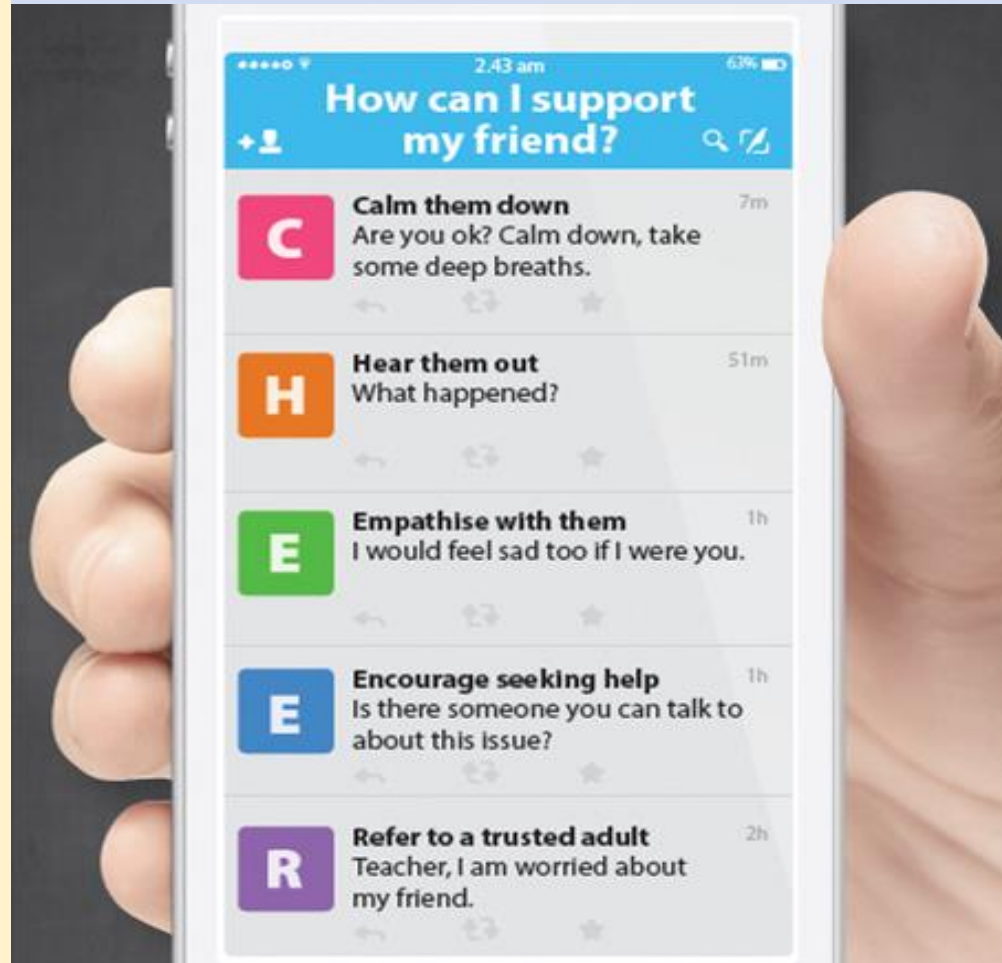



Supporting Your Friend

We may each experience different emotions upon receiving the results. You can share your friends' joy by congratulating them or give words of encouragement to friends who may be disappointed with their results.



Keep a lookout for your friends in distress. You can support them in the following ways:





There are other hotlines and chats available if you are more comfortable seeking help using these platforms.



SOS

SOS provides round-the-clock emotional support for those in distress, thinking of suicide or affected by suicide. This service is manned by trained volunteers.

Call: **1767**
(24-hour helpline)

Whatsapp: **9151 1767**
(24-hour Care Text)

There are also alternative avenues for emotional support for those who prefer to write. Response time for this service is within 48 hours, excluding weekends and public holidays.


Email: pat@sos.org.sg

TOUCHline

TOUCHline is a helpline to provide youths with emotional support and practical advice.

Call: **1800-377 2252**

Monday- Friday (Excluding Public Holidays): 9am – 6pm



There are other hotlines and chats available if you are more comfortable seeking help using these platforms.



Community Health Assessment Team (CHAT)

If you experience prolonged difficulties, CHAT provides personalised and confidential mental health checks and face-to-face consultation for youth aged 16 to 30. To speak with a youth support worker, you can:

Visit: **CHAT Hub at *SCAPE, #05-05**
Call: **6493 6500/ 6501**
Email: **CHAT@mentalhealth.sg**

eC2

eC2 is an e-Counselling Centre where you can talk to a trained counsellor about the issues you are facing, right where you are.

Youths may chat with a counsellor online at:
www.ec2.sg

Monday – Friday (Excluding Public Holidays): 10am – 12pm & 2pm – 5pm



There are other hotlines and chats available if you are more comfortable seeking help using these platforms.



Carey

Carey is an online platform by Care Corner that provides free mental health check-ins with mental health professionals. Explore self-help tools and learn how to cope better or support your friends too.

Find out more:

<https://carey.carecorner.org.sg/>



mindline.sg

mindline.sg is an online platform that provides tools, tips and resources to help you manage your health and well-being. Explore and find out how you can improve your mental well-being and support your friends too.

Find out more:

www.mindline.sg



There are other hotlines and chats available if you are more comfortable seeking help using these platforms. Scan the QR code below for a helpful resource.



SOS provides round-the-clock emotional support for those in distress, thinking of suicide or affected by suicide.

Call: **1767**
(24-hour helpline)

Whatsapp: **9151 1767**
(24-hour Care Text)

Community Health Assessment Team

(CHAT) provides personalised and confidential mental health checks and consultation for youths. To speak with a youth support worker, you can:

Visit: **CHAT Hub at *SCAPE, #05-05**
Call: **6493 6500/ 6501**
Email: **CHAT@mentalhealth.sg**

mindline.sg is an online platform that provides tools, tips and resources to help you manage your health and well-being. Find out more at: www.mindline.sg



TOUCHline is a helpline to provide youths with emotional support and practical advice.

Call: **1800-377 2252**
*Monday- Friday (Excluding Public Holidays):
9am – 6pm*

Carey is an online platform by Care Corner that provides free mental health check-ins with mental health professionals. Find out more at: <https://carey.carecorner.org.sg/>

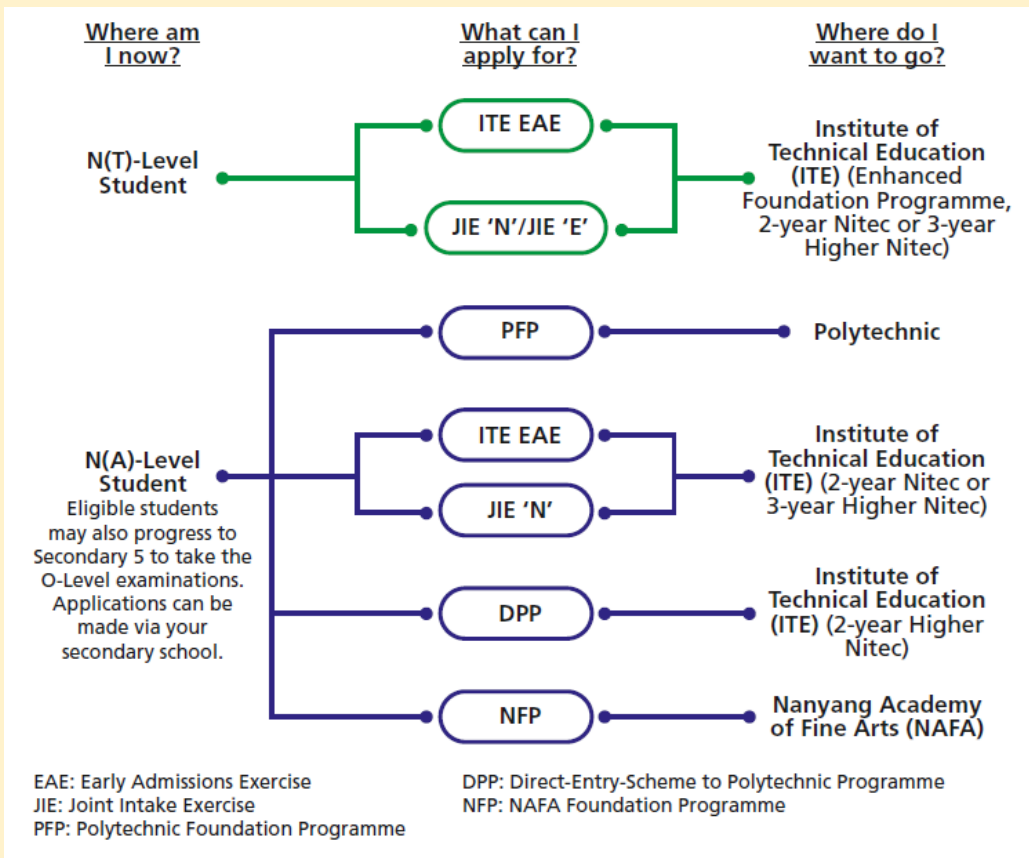
eC2 is an e-Counselling Centre where you can talk to a trained counsellor about the issues you are facing, right where you are.

Chat with a counsellor at: www.ec2.sg
*Monday – Friday (Excluding Public Holidays):
10am – 12pm & 2pm – 5pm*

Admissions Exercises

Things to note





<https://www.moe.gov.sg/post-secondary/admissions>

For more information on applying to these courses, you can visit

<https://ite.edu.sg/admissions/traineeship>

For the list of 3-year Higher Nitec courses, please visit

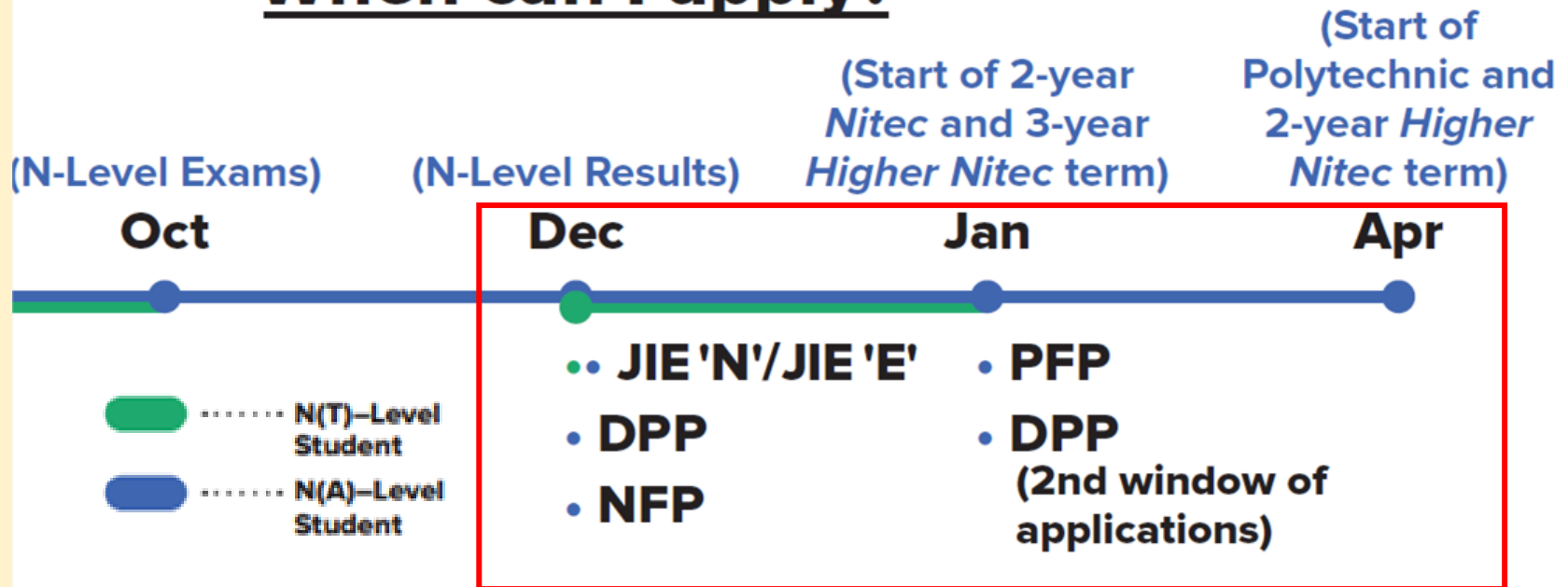
<https://www.ite.edu.sg/courses/full-time-courses/nitec-and-3-year-higher-nitec>

Selected Nitec and Higher Nitec courses are available in traineeship mode.

Source: A Guide to Post-Secondary Admissions Exercises

Admissions Exercises Application Timeline

When can I apply?



Details of Admissions Exercises




JIE 'N'/JIE 'E' – Joint Intake Exercise


The JIE 'N' is for 2-year *Nitec* or 3-year *Higher Nitec* courses offered by ITE.

The JIE 'E' is for GCE N(T) students to apply for the 3-year *Nitec* course with Enhanced *Nitec* Foundation Programme.



go.gov.sg/applyjie

 N(T)–Level Student

 N(A)–Level Student

Nitec (ITE)

- Applicants for full-time Nitec courses must first **meet the entry requirements** including passes in the pre-requisite subjects for the courses applied.
- Admission is merit-based.
- Posting to a course is based on aggregate of **best 4 GCE 'N' Level subjects**, including **pre-requisite subjects** and **bonus points** where applicable and is subjected to availability of vacancies.
- **NA students can apply concurrently with DPP** – 2 separate URLs on ITE application website
- Applicants may choose up to a **maximum of 12 choices**. Each choice will comprise the course and college:
 - E.g.
 - Choice 1: Nitec in Retail Services at College **Central**
 - Choice 2: Nitec in Retail Services at College **West**

3-Year Higher Nitec Courses

ITE has introduced a 3-year *Higher Nitec* full-time programme from Academic Year 2022. Streamlining the current *Nitec* and *Higher Nitec* curricula, this will allow students to attain a *Higher Nitec* qualification directly in **only three years instead of the current four years.**

ITE will offer **25** 3-year Higher Nitec courses in Academic Year (AY) 2024.

2022 (8 courses)

- Accounting
- Sport Management
- Electronics Engineering
- Security System Integration
- IT Systems & Networks
- Cyber & Network Security
- Business Information Systems
- IT Applications Development

2023 (11 courses)

+

- AI Applications
- Data Engineering
- Immersive Applications & Game

2024 (25 courses)

+

- Biochemical Technology
- Applied Food Science
- Chemical Process Technology
- Nursing
- Community Care & Social Services
- Opticianry
- Human Resource & Financial Services
- Logistics & Supply Chain Management
- Tourism
- Retail & Online Business
- Event Management
- Passenger Services
- Beauty & Wellness Management
- Hairdressing & Salon Management

Important Dates

Key Activity	Period for 2-Year and 3-Year Nitec Courses, and 3-Year Higher Nitec courses	Remarks
1st Phase (Main Phase)		
Application	18 Dec 2023 (2.30pm) to 21 Dec 2023 (5pm)	Apply through the Internet at https://www.ite.edu.sg with NRIC / FIN and Date of Birth. You may also apply using SingPass.
Release of Course Interview Details	22 December 2023 (from 2 pm)	Applicants who have applied for courses under Aptitude-Based Admission are to log in at https://istudent.ite.edu.sg check if they are shortlisted for interview.
Release of Results	29 Dec 2023 from 9am	Check results at https://istudent.ite.edu.sg with web ID and password
Acceptance of Course Offer Period	29 Dec 2023 to 3 Jan 2024	Accept course offer at https://istudent.ite.edu.sg with web ID and password
2nd Phase (Late Application/Appeal Phase)		
Application	29 Dec 2023 to 3 Jan 2024	Apply through the Internet at https://istudent.ite.edu.sg with NRIC / FIN and Date of Birth. You may also apply using SingPass.
Release of Results	10 Jan 2024 from 9am	Check results at https://istudent.ite.edu.sg with web ID and password
Acceptance of Course Offer Period	10 Jan 2024 to 12 Jan 2024	Accept course offer at https://istudent.ite.edu.sg with web ID and password
3rd Phase (Final Top-up Phase)		
Application	1 st Top-up Phase Application - 10 Jan to 18 Jan 2024 2 nd Top-up Phase Application - 24 Jan to 7 Feb 2024	Apply through the Internet at https://istudent.ite.edu.sg with NRIC / FIN and Date of Birth. You may also apply using SingPass.
Release of Results	1 st Top-up Phase - by 24 Jan 2024 2 nd Top-up Phase - by 14 Feb 2024	Check results at https://istudent.ite.edu.sg with web ID and password
Acceptance of Course Offer Period	1 st Top-up Phase - by 24 Jan 2024 2 nd Top-up Phase - by 14 Feb 2024	Accept course offer at https://istudent.ite.edu.sg with web ID and password
Jan 2023 Intake Term Commencement Date: <u>8 Jan 2024</u>		

Information For Students on Key Dates for Jan 2024 intake

1. All N(A)*/N(T) school leavers are encouraged to put in an application during the **1st Phase (Main Phase)** between **18 Dec 2023 (2.30pm) and 21 Dec 2023 (5pm)**. Application results for the 1st Phase will be released on **29 Dec 2023 from 9am**.
2. **Applicants who have applied for courses under Aptitude-Based Admission are to log in at <https://istudent.ite.edu.sg> on 22 Dec 2023 (from 2:00 pm) check if they are shortlisted for interview.**
3. If you wish to appeal, please accept the course offered **before** applying in the **2nd Phase (Late Application/Appeal Phase)** between **29 Dec 2023 and 3 Jan 2024**. The application results for the 2nd Phase will be known on **10 Jan 2024 from 9am**.
4. Unsuccessful applicants can appeal under the **3rd Phase (Final Top-up Phase)** between **10 Jan and 18 Jan 2024**, and between **24 Jan and 7 Feb 2024** for courses with vacancies. The application results for the 3rd Phase will be known by **24 Jan 2024** and by **14 Feb 2024**.

For further enquiries, students may contact
ITE Hotline: 1800-2222-111

Details of Admissions Exercises

PFP – Polytechnic Foundation Programme

PFP is a one-year programme that offers a practice-oriented curriculum taught by polytechnic lecturers to better prepare polytechnic-bound Secondary 4 N(A) students for entry into selected polytechnic diploma courses. PFP students are given provisional places in diploma programmes, subject to them passing all modules in the one-year programme.



go.gov.sg/pfp

DPP – Direct-Entry-Scheme to Polytechnic Programme

DPP allows Secondary 4N(A) students to be admitted directly into selected 2-year *Higher Nitec* programmes at ITE without having to sit for the O-Level examinations or undergo a *Nitec* programme. DPP students who successfully complete their *Higher Nitec* courses at ITE and attain the required qualifying Grade Point Average (GPA) scores are guaranteed a place in a polytechnic diploma course mapped to their *Higher Nitec* course.



go.gov.sg/applydpp

NFP – NAFA Foundation Programme

NFP is a one-year practice-based programme that prepares N(A)-Level holders to pursue a diploma in the creative arts. NFP students who successfully complete the programme will be offered a place in their chosen diploma course at NAFA.



go.gov.sg/nafa-applynow

-  N(T)-Level Student
-  N(A)-Level Student

Direct Entry Scheme to Polytechnic Programme (DPP)

- Obtained ELMAB3 aggregate of 19 points or less (before deduction of CCA bonus points); and
- Met the subject specific requirements
- Assured of a place in a related polytechnic course, subject to achieving the qualifying Grade Point Average (GPA)
- May apply for DPP & JIE N Nitec & 3 year Higher Nitec courses concurrently - 2 separate admission exercises on ITE website

For Applied Sciences, Engineering and Info-Communications Technology courses:

GCE N-Level subjects	Minimum Required Grades
English Language Syllabus A	4
Mathematics (Syllabus A/ Additional)	4
Any three other subjects excluding CCA	5

For Business & Services courses:

GCE N-Level subjects	Minimum Required Grades
English Language Syllabus A	3
Mathematics (Syllabus A/ Additional)	4
Any three other subjects excluding CCA	5

Key Dates for DPP Application

Key Activity	Dates
Application	Mon 18 Dec 2023 (from 2.30pm) to Thu 21 Dec 2023 (5.00pm)
Results of Main Application and Course Acceptance Period	Fri 22 Dec 2023 (from 2 pm) to Wed 27 Dec 2023
Appeal Application Period	Fri 22 Dec 2023 (from 2 pm) to Wed 27 Dec 2023
Results of Appeal and Course Acceptance Period	Fri 29 Dec 2023 (from 9 am) to Wed 3 Jan 2024
College Reporting & Term Commencement (for Main and Appeal phases)	Mon 8 Jan 2024
Final Application Period	TBC
Results of Final Application and Course Acceptance	Thu 18 Jan 2024 (from 9am) to Mon 22 Jan 2024
College Reporting (for final application phase)	Wed 22 Jan 2024
Final Appeal Period	Thu 18 Jan 2024 to Mon 29 Jan 2024
Results of Final Appeal and Course Acceptance	Tue 23 Jan 2024 to Thu 8 Feb 2024 (5pm)

Polytechnic Foundation Programme (PFP)

- ELMAB3 (English, Mathematics, Best 3 Subjects) raw aggregate score of ≤ 12 points (excluding CCA bonus points) at the GCE 'N' Level examination; and
- Met the following subject-specific requirements:

For Courses featured in Group 1	Minimum Required Grades	For Courses featured in Group 2	Minimum Required Grades
English Language Syllabus A	3	English Language Syllabus A	2
Mathematics Syllabus A / Additional Mathematics	3	Mathematics Syllabus A / Additional Mathematics	3
One of the following relevant subjects: - Design and Technology - Food and Nutrition - Science (Chemistry, Biology) - Science (Physics, Biology) - Science (Physics, Chemistry)	3	One of the following relevant subjects: - Art - Literature in English - History - Combined Humanities - Geography - Principles of Accounts	3
Any two other subjects excluding CCA	4	Any two other subjects excluding CCA	4

English for Group 2 courses require a min. Grade 2. Best 2 subjects require min. Grade 4.

Eligibility does not guarantee placement.

Polytechnic Foundation Programme (PFP)

- For students taking 'O' Level subjects, the following conversion matrix applies:

GCE O-Level Grade	Converted Grade
A1-B3	1
B4-C6	2
D7	3
E8	4

Note: GCE 'O' Level Grade 9 does not count towards score computation or determining minimum entry requirements

When can I apply?

After the release of O Level results of following year, usually in mid Jan.

For Students Planning for Private Education



The 3Rs when deciding on Private Education

Reasons

- Why are you furthering your studies?
- Is this for better job prospects?

Readiness

- How ready are you to further your studies?
- Can you cope with the academic rigour and assignment deadlines?
- Can you fund your studies?

Risks

- Do you know the possible drawbacks?
- Your expected returns may not exceed the investments you put into your private education.
- Private schools may make exaggerated claims.
- Private schools may close due to various reasons.
- You may not get a full refund if you withdraw from your course.

<https://go.gov.sg/3rs>



8 Things You Should Know Before You Enrol in A Private School

School Registration
Ensure the school is registered with CPE. Review the school's registration period, expiry date and its overall registration track record.

Partner Institution
Research on the partner institution conferring the diploma or degree, and whether the qualification is recognised by the industry.

EduTrust Certification Scheme
Is the school EduTrust-certified*? Under the scheme, private schools are assessed for their performance in areas such as school management and provision of student support services.

**Schools are required to obtain EduTrust certification in order to offer external degree programmes*

School Premises
Head down to the campus ground to check the facilities and support services. Observe the study environment too.

Fee Protection
Ask if there is any course fee protection so that you will be able to recover unconsumed course fees should the school close down.

Beyond Course fees
Find out about the course syllabus and materials, graduation rates and employment prospects. Approach the alumni to find out what they think of the school.

Teachers
Check if the teachers are qualified to teach the course.

Internship
If industry attachment is included, find out which organisation you will be attached to, the period of attachment and the alternative arrangement should the attachment become unavailable. Verify the information with the organisation as well.

Some resources and upcoming events



NAFA Foundation Programme Info Day

A banner for the NFP Info Day event. The background is dark with a stylized globe on the right side. The text 'NFP INFO DAY' is written in large, bold, green letters. Below it, the date and time '20 DECEMBER 2023 | 2.30PM - 4.30PM' are written in white. On the right side, the phrase 'COURAGE TO CREATE' is written in white, stylized letters.

NFP INFO DAY

20 DECEMBER 2023 | 2.30PM - 4.30PM

**COURAGE
TO CREATE**

NAFA Foundation Programme (NFP) is a specially crafted bridging course designed to equip **N(A) students** interested in the arts with the skills and knowledge necessary for a successful enrolment and completion of a **diploma course** at NAFA.

Link: <https://enrol.nafa.edu.sg/nfp>

Application Process - Nitec Courses (JIE)



Pathways for the 4NA / 4NT students

ITE (Nitec Courses)

- Refer to individual course details and requirements in the Joint Intake Exercise (JIE) booklet.
- The courses that you are eligible for are printed in your result slip – **Form N**. You can refer to the result slip to decide on your desired course.
- **Go online and apply in the next few days BEFORE 21 December 2023, Thursday (5.00 pm)**. It starts from today.
- Computers are available at the ITE Institutes for applicants to use during the application period.



Pathways for the 4NA / 4NT students

ITE (Nitec Courses) – Important NOTES!

- There is keen competition for places in ITE *Nitec* courses.
- Not participating in the Main Application Phase greatly reduces a student's likelihood of gaining a place.
- Students need to exercise the full 12 choices and include less popular options to maximise their chances of a successful posting.
- N(T) students with 0, 1 pass can apply for e-NFP as an additional option
- N(A) students need to understand that they are on 'an equal footing' with N(T) students in ITE's admission process.



Application Process

- DPP (Higher Nitec Courses)



Key Dates for DPP Application

Key Activity	Dates
Application	Mon 18 Dec 2023 (from 2.30pm) to Thu 21 Dec 2023 (5.00pm)
Results of Main Application and Course Acceptance Period	Fri 22 Dec 2023 (from 2 pm) to Wed 27 Dec 2023
Appeal Application Period	Fri 22 Dec 2023 (from 2 pm) to Wed 27 Dec 2023
Results of Appeal and Course Acceptance Period	Fri 29 Dec 2023 (from 9 am) to Wed 3 Jan 2024
College Reporting & Term Commencement (for Main and Appeal phases)	Mon 8 Jan 2024
Final Application Period	TBC
Results of Final Application and Course Acceptance	Thu 18 Jan 2024 (from 9am) to Mon 22 Jan 2024
College Reporting (for final application phase)	Wed 22 Jan 2024
Final Appeal Period	Thu 18 Jan 2024 to Mon 29 Jan 2024
Results of Final Appeal and Course Acceptance	Tue 23 Jan 2024 to Thu 8 Feb 2024 (5pm)

For students who are interested in the DPP:

- You should apply to the DPP between 18 Dec 2023 (2.30pm) to 21 Dec 2023 (5 pm).
- Results will be out on **22 Dec 2023 at 2.00 pm**.
- Students who have accepted their DPP offers in December should **not** continue with Sec 5.



For students who are uncertain and/or interested in both PFP and DPP:

- **If you are certain that you do not want to continue with Sec 5 and pursue the GCE O-Levels**, you may apply for the DPP in December. Upon the release of the GCE O-Level results in January, eligible students may be invited for the PFP. If you are offered and accept a PFP place, you may withdraw from the DPP. Students who are eligible will be alerted by their FTs.

Alternatively,

- You may progress to Sec 5 first. Upon release of the GCE O-Level results in January, you may then apply for the DPP or wait for the PFP invitation concurrently.



Application Process

- Progress to Secondary 5NA



Pathways for the 4NA students

Secondary 5 NA

- ELMAB3 of 19 points and less. All subjects used for the aggregate must be at least Grade 5.
- **Attend a compulsory briefing on 19 December 2023, Tuesday at 8.00 am in the school library.**
- Collect the YELLOW application form and 2023 5NA Booklist at the back of the rooms and submit to the General Office by **20 December 2023, Wednesday, 12.00 pm.**
- Report to school on **2 January 2024, Tuesday** in proper school attire and check your name against the class lists set up outside the General Office.
- Remember to purchase your books before school reopens.



Application Process (for 4NA only)

- Retain in Secondary 4NA



Pathways for the 4NA students

Retain in Secondary 4 NA

- Eligible students will be informed by your FTs.
- Apply for ITE (Nitec) Courses to maximise your options.
- Collect the REPEAT PINK form from the back of the rooms.
- Call the General Office at 65729100 to make an appointment to meet the school leaders with your parents by tomorrow, 19 Dec 2023 12.00 noon.
- Date of meeting: **Wednesday, 20 December 2023 from 9.00 am – 12.00 pm**
- On the meeting day, you **MUST submit** the PINK application form, your ITE course submission and relevant documents.



Other administrative matters

- Candidates who wish to review their GCE 'N' Level Examination results must submit their appeals and make payment to the school by **21 December 2023 (Thursday), 5:00 pm.**
- The appeal fee per subject will be as follows:
 - Singaporean Citizen - \$112.35
 - Singapore Permanent Resident - \$113.40
 - International Student - \$113.40



Other administrative matters

- Candidates who wish to made amendments to their certificates must submit their appeals and make payment to the school by **Thursday, 21 December 2023, 5:00 pm.**
- The amendment request fee per certificate will be **\$50.**



Other administrative matters

- This administrative slides will be uploaded to the School Website for your reference.
- A step-by-step guide on how to apply for JIE online will also be uploaded.



ALL THE BEST FOR
YOUR RESULTS!

LABOR, OMNIA, VINCIT

