



ASSUMPTION ENGLISH

Level 1 Parent Engagement Session

10 January 2025

Welcome to Assumption English School



ASSUMPTION
ENGLISH

Objectives

- To provide information on school and curriculum matters
- To provide support for the child as he or she transits into Secondary School



Sec 1 Form Teachers

Form Teacher – 1 Vincent	Ms Zhou Jie
Form Teacher – 1 Vincent	Ms Goh Kai Xin
Form Teacher – 1 Adolphus	Ms Yee Yunn Kymn
Form Teacher – 1 Adolphus	Ms Valerie Co
Form Teacher – 1 Raymond	Ms Azra
Form Teacher – 1 Raymond	Ms Sarah Ong Jia Qi
Form Teacher – 1 Emmanuel	Mdm Sumiate
Form Teacher – 1 Emmanuel	Mdm Dieh Ye Woon
Form Teacher – 1 Noel	Ms Lilian Li
Form Teacher – 1 Noel	Mr Ong Kong Sing
Form Teacher – 1 George	Ms Wang Lee Keow
Form Teacher – 1 George	Ms Meera
Form Teacher – 1 John	Mr Tang Kok Bin
Form Teacher – 1 John	Ms Estella Tan



The Story of Montfort in Dinan

Let's learn together



ASSUMPTION
ENGLISH

Saint Louis-Marie Grignion de Montfort



Who is he?

Saint Louis-Marie Grignion de Montfort (1673–1716) was a French Catholic priest, missionary, and **founder of the Montfortian congregations.**



ASSUMPTION
ENGLISH

Story of Montfort in Dinan



Where is Dinan?

Dinan is located in the western part of France, in the region called Brittany.



ASSUMPTION
ENGLISH

Story of Montfort in Dinan

Winter had settled over Dinan...



ASSUMPTION
ENGLISH

Story of Montfort in Dinan



One night while returning from his missionary work, Louis-Marie found a homeless person chilled to the bone, and covered with sores, too weak to call for help.

Story of Montfort in Dinan



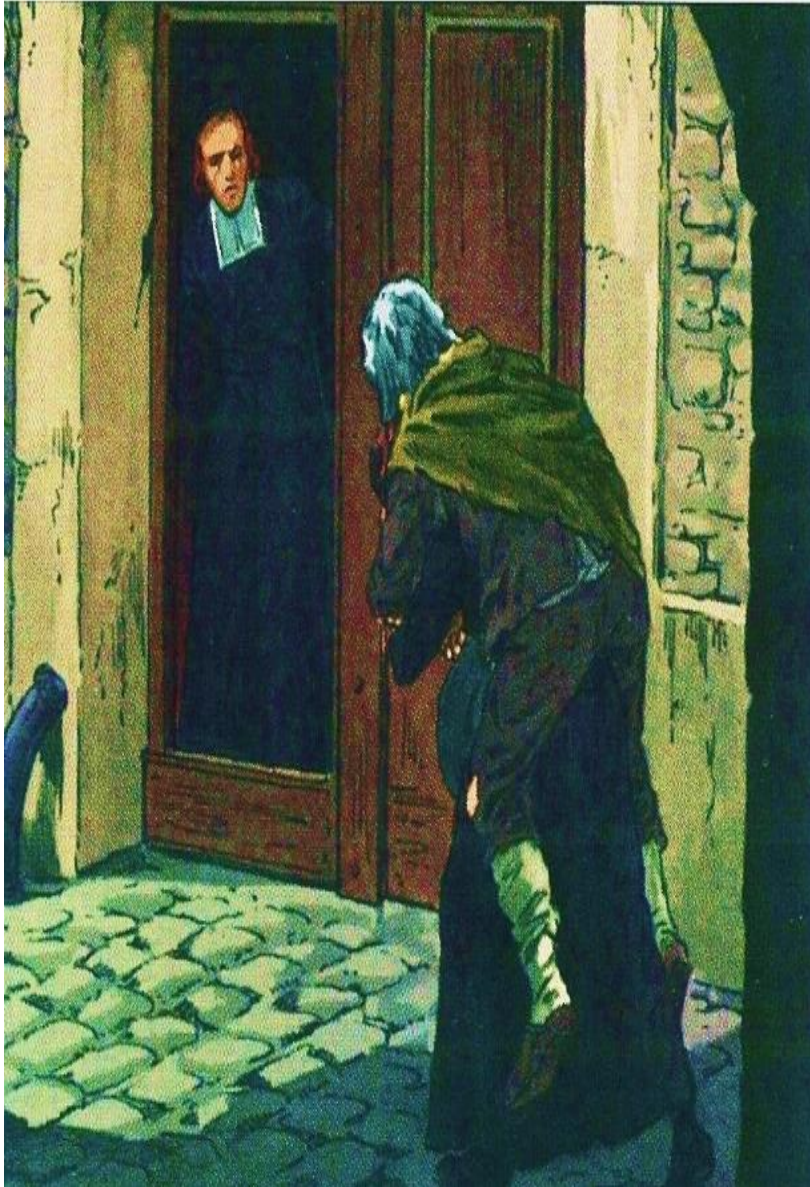
He places him on his shoulders and carries him to the house of the missionaries, where he stayed.

It is late at night and the door is closed.



ASSUMPTION
ENGLISH

Story of Montfort in Dinan



He calls out several times, knocking on the door «*OPEN TO JESUS CHRIST!*»

The doorman finally opens, but has difficulty recognizing Jesus in this ragged person, Louis Marie was carrying.

He took the sick man to his own room, laid him on his bed, warms him as best as he can and spent the night praying and nursing the poor man.

Louis Marie saw in the sick man, the person of God Himself.

What can we learn from the Story of Montfort in Dinan

This story serves as a reminder to all AssumptionKnights to:

- **Have faith** and remain resilient in the face of challenges.
- **Show compassion** and take action to serve others.
- **See God in others** and recognise the divine in each person.
- **Respect one another**, fostering kindness and understanding.



Parent Support Group



ASSUMPTION
ENGLISH

Parent Support Group

You can also follow our Parent Support Group in their social media pages:



@assumption_english_school_psg



56

Posts

120

Followers

32

Following

Assumption English School PSG

Parents as PARTNERS in Education ♦ Stay Connected

♦ Be Supported ♦ Promote & spread awareness of parental support in AES ♦ JOIN... more
assumptionenglish.moe.edu.sg/



Followed by stgabrielsfoundation.sg,
aes_manna and 11 others

Following ▾

Message



ASSUMPTION
ENGLISH



Assumption English School -
Parent Support Group

High School

Following

Home About Photos Videos More ▾

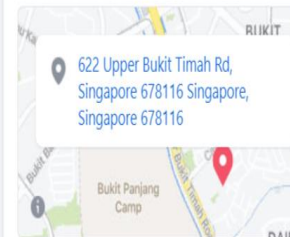
Like

Message



About

See All



Welcome to AES-PSG

This page is created since 2020 and managed by the AES-PSG Team @ Assumption English School...

PSG Goals

As School Partners, we share a common objective of supporting school mission and vision.



Create Post

Photo/Video

Check in

Tag Friends



Assumption English School - Parent Support Group

January 13 at 4:59 PM · 🌐

<https://goodyfeed.com/secondary-school-student-laptop/>



Parent Support Group

Home-School Partnership is key to fostering positive and nurturing environments for each child at home and in school.

We welcome parents' active involvement in school through our Parent Support Group and other networking avenues to support our learners.

Do register your attendance and indicate your interest for us to keep you in the loop on parent networking sessions!

<https://for.edu.sg/s1parentmeet>



ASSUMPTION
ENGLISH

Parenting for Wellness

Ministry of Education (MOE), Ministry of Social and Family Development (MSF) and Health Promotion Board (HPB) are pleased to present to you ***Parenting for Wellness***, an initiative to empower you with key knowledge and skills to build strong parent-child relationships, strengthen your children's mental well-being and resilience, and parent effectively in the digital age.



We hope these resources from Parenting for Wellness support you in raising happy, confident and kind children.



Find out what is happening in AES



aes_manna

Following ▾

Message



897 posts

2,200 followers

52 following

Assumption English School

Keeping the AssumptionKnight Spirit alive!

🔗 linktr.ee/aesmanna

https://www.instagram.com/aes_manna/



in the news



life @ aes



open house!



For any queries, please feel free to contact us at **6572 9100** or email us at **aes@moe.edu.sg**



ASSUMPTION
ENGLISH

Time	Programme Outline
5.30 pm	<ul style="list-style-type: none"> ➤ Principal's Address (Mr Toh) ➤ Academic Curriculum & Blended Learning (BL) (Mrs Chong) ➤ CCE Curriculum & Student Initiated Learning (SIL) & Student Well-Being Matters (SIL) (Mr Ng) ➤ National Digital Literacy Programme (Mr Tang) ➤ Student Management Matters (Mr Wong) ➤ Overview of Real Programme: Sec 1 Camp (Ms Sheryl) <p>Dismissal to Classrooms. (Form Teachers will guide parents to the classrooms on Level 5)</p>
*6.45 pm	Classroom interaction with Form Teachers (20 to 30 mins)
7.15 pm	End of Parent Engagement Session



Mr Vincent Toh Principal's Address



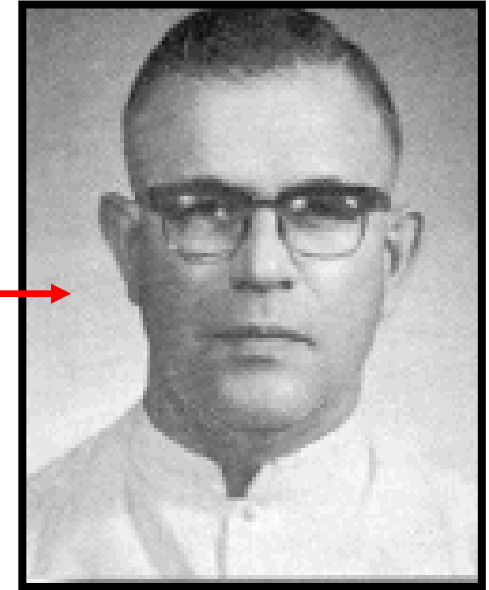
ASSUMPTION
ENGLISH

A most beloved school in the West



ASSUMPTION
ENGLISH

Our Legacy



The Montfort Brothers of St. Gabriel arrived in Singapore in **1936** at the request of the Bishop of Singapore.

After World War II, Brother Vincent established Boys' Town in 1948 to provide shelter and care for boys. The school was founded in 1953 to provide education for the boys living in Boys' Town.

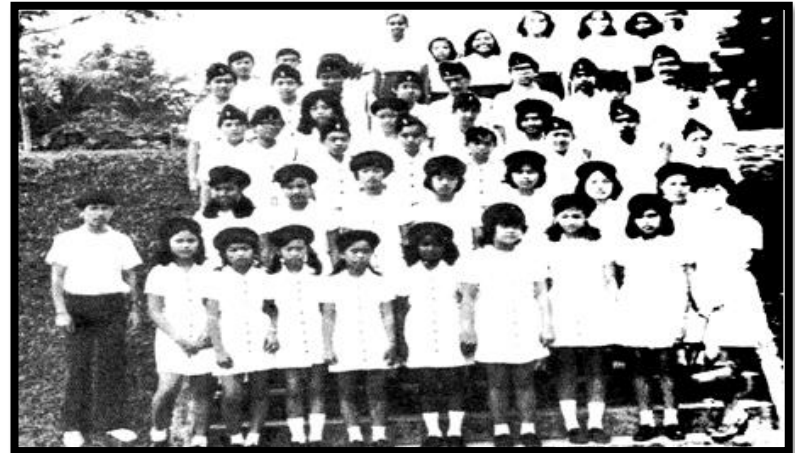


ASSUMPTION
ENGLISH

Our Legacy



We were then known as
Boys' Town English School.



In **1973**, we merged with
CHIJ Bukit Timah to become
a co-ed Catholic Mission School.

The school was renamed **Assumption English School** in honour of
our Lady, Mother Mary, the Patroness of the Brothers of St. Gabriel.



ASSUMPTION
ENGLISH

School Vision

Men and Women of Character and Learning in the Service of God and Community



The stories of St Louis Marie de Montfort:

- **Dinan:** Compassion for all
- **Rennes:** Standing up for the Last, the Lost & the Least
- **Poitiers:** Those whom the world rejects, must move you the most
- **Cesson:** Give your all in everything that you do



ASSUMPTION
ENGLISH

Montfortian Education Charter



ASSUMPTION
ENGLISH

Key School Facts

- Established in 1953 by the Montfort Brothers of St Gabriel
- Government-aided school
- Offers G1, G2, G3 courses



ASSUMPTION
ENGLISH

O and N Level Exams Results 2024

Sec 4 Express

Eligible for JC: 39.6%
(35% in 2023)

Eligible for JC/Poly: 91.9%
(91.3% in 2023)

Sec 5 Normal (Acad)

Eligible for JC/Poly: 83.3%
(71.4% in 2023)

Sec 4 Normal (Acad)

Eligible for DPP/Sec 5: 78.1%
(77.3% in 2023)

Sec 4 Normal (Tech)

Eligible for ITE: 100%



Applied Learning Programme - SPEAK

SPEAK
(Speak English
with Grace and
Knowledge)

- Nurtures confident communicators in English Language
- Students exposed to broadcasting, public speaking to gain authentic presentation skills



Apply academic
knowledge to
authentic settings

Stronger
motivation for
learning



ASSUMPTION
ENGLISH

Lifelong Learning - Community Youth Leadership



ASSUMPTION
ENGLISH

Catholic Activities

- Daily morning prayers & reflections
- The Celebration of Founder's Day (St Louis Marie de Montfort) with Mass
- Mass for start and close of academic year and examinations
- 'Faith Alive' fellowship programme every Friday after school (12:40pm – 1:40pm)
- Young Montfortian Associate (2nd CCA)



Academic Learning - Special Educational Needs

Special Educational Needs Officer (SEN Officer) supports students with mild special educational needs such as dyslexia, autism, ADHD by:

- Providing in-class support
- Conducting individual/group support and training
- Working with teachers and parents to support their learning



Learning is the key - PEACE Routine

Punctuality: Being on time for every lesson

Environment: Everyone deserves a conducive learning area

Attitude: Readiness to learn

Care: Consideration for community

Effort: Showing up and giving personal best



ASSUMPTION
ENGLISH

Learn how to Learn – 5 R's

1. Read

- Annotate- Pen down your thoughts, comments, questions
- Outline
- Highlight

2. Recall

- Mental recall
- Write and recall

3. Rewrite

- Mind Map
- Summarise and make your own notes

4. Reflect

- What have you learnt?
- How do you know?
- What are your strengths and weakness?

5. Repeat the 5 R's



Our Alumni



Vernetta Lopez
Artiste



Marcus Tan
Carousell Co-Founder



Sean Tan
1st Singaporean WWE
wrestler



Timothy Loh
3 times SEA Games Medalist



Lee Wung Yew
3-time Olympic Shooter
President Olympians Singapore



Oliver Tan
Founder and CEO of
ViSenze
Most Promising Startup
Award



Jase Lee, Winner of Lee
Kuan Yew Award for All
Round Excellence 2022

Every Parent, A Supportive Partner

- Keep in touch during your child's secondary school journey. Talk about his/her future plans, dreams, passions.
- Be supportive but not over-anxious.
- Encourage while ensuring discipline to grow and learn.
- Care for your child's well-being and setting healthy routines (eat, sleep, exercise, play, use of devices).
- Promote consistent and effective effort.



Parent and School Communication Policy

Communication between school and parent is an **essential component** of school life.

It is an **intentional effort** and a **shared responsibility** in order to provide **support** and to **improve** the ways students learn and develop.

The school is committed to help and support you with sincerity and professionalism, and there must be **mutual courtesy** and **respect**.



Parent and School Communication Policy

Teachers have numerous duties and matters to attend to during a normal school day.

The AES general office should be the **first point of contact**, particularly for non-educational queries.

Parents may direct queries to the form teacher/subject teachers through email (aes@moe.edu.sg). Do allow teachers to respond within 3 working days.

School will inform parents about current activities via **Parents' Gateway**. Hence it is important for parents to download the Parents' Gateway app and to read and take note of announcement published.

Other than the bi-yearly Parent Teacher conferences, parents should **make an appointment** if they wish to meet the teacher on a school



Parent and School Communication Policy

Teachers' well-being is as important as students' well-being.

Teachers are not expected to provide their personal mobile numbers to students or parents. If a teacher shares their numbers to students, it is

- meant **only for student to communicate with their teacher** on school matters.
- **should not be shared without the teachers' consent.**

Teachers and staff **will not respond to emails/ students' queries after 5pm or on weekends** unless the matter is an emergency in nature.

Communication should be gracious and respectful. The school owes a duty of care to its teachers and staff. To protect them from intimidatory or threatening behaviour in a verbal or written form. The school reserves the right not to engage under such circumstances.



Together, Everyone Matters

What are my gifts?

What can I offer?



ASSUMPTION
ENGLISH



Academic Updates



ASSUMPTION
ENGLISH

Academic Focus for Lower Secondary

The key academic objective for **Lower Secondary**:

Every student experiences a broad-based curriculum where a **strong foundation** is built via **discovery and exploration**.

- Authentic **Curriculum**
- Student-centric **Pedagogies**
- **Assessment** and **Feedback**



Subjects in Secondary School

	G3 and G2	G1
Core Curriculum	<ol style="list-style-type: none"> 1. English Language 2. Mother Tongue Language 3. Mathematics 4. General Science 5. English Literature 6. History 7. Geography 	<ol style="list-style-type: none"> 1. English Language 2. Mother Tongue Language 3. Mathematics 4. General Science
Common Curriculum	<ol style="list-style-type: none"> 1. Design & Technology (D&T) 2. Food & Consumer Education (FCE) 3. Art 4. Physical Education (PE) (Non-examinable) 5. Music (Non-examinable) 6. Montfortian Achievers' Programme (MAP) (Non-examinable) 	



ACADEMIC PROGRAMMES FOR SECONDARY 1

AUTHENTIC CURRICULUM ♦ STUDENT-CENTRIC PEDAGOGIES

- **SPEAK** – nurtures confident communicators in English Language through broadcasting & public speaking to gain authentic presentation skills
- **Mother Tongue Fortnight** – Programmes and learning journeys to enhance students' understanding and appreciation of various cultures and traditions of the different races and nationalities in Singapore.
- **Virtual Mass Escape Game** – Students apply their mathematics, science, humanities, CCE knowledge and skills to solve puzzles in this experiential learning experience.
- **Humanities** – Historical and geographical investigation trips to enhance students' learning of these subject areas.

ACADEMIC PROGRAMMES FOR SECONDARY 1

AUTHENTIC CURRICULUM ♦ STUDENT-CENTRIC PEDAGOGIES

- **Science** – Enhanced learning experiences with **STEM-VIA** and Science Experiential Projects (**SEP**) to promote interest, learning and creativity.
- **Mathematics** – Mathematical modelling tasks where students apply their mathematical knowledge to solve open-ended problems.
- **Design & Technology** – coding and incorporating the coding into their D & T projects.
- **Booster Sessions for English Language and Mathematics** – Students who need extra support with these subjects will have special remediation sessions.

Assessment Guidelines for Secondary 1

	Weighted Assessment in Term 1	Weighted Assessment in Term 2	Weighted Assessment in Term 3	Semestral Assessment in Term 4
	WA1	WA2	WA3	SA2
Weighting	15%	15%	15%	55%

- Different subjects have varying components
- Varied modes of assessment
- Assignments and homework including WA and EOY papers will be reviewed and returned for students to work on their areas for improvement.



Promotion Criteria for Secondary 1

From the 2024 Sec 1 cohort

At the end of Sec 1

Students will progress to Sec 2 without needing to meet the common academic requirement.

This eases the transition of a student from primary to secondary school and provides time for students to adjust to the curriculum.



Singapore-Cambridge Sec Edn Cert

Secondary school experience under Full SBB [from 2024 S1 cohort]

Secondary school experience

1. Mixed form classes and common curriculum subjects at Lower Secondary
2. Greater flexibility to offer subjects at various subject levels
3. Shift away from course-based subject offerings

After PSLE

Start of secondary school

End of secondary school

Post secondary

Entry to
Secondary 1

Through Posting Groups

Singapore-Cambridge
Secondary Education
Certificate (SEC)
examination

Revised
admission
criteria



ASSUMPTION
ENGLISH

Full Subject-Based Banding (Full SBB)

There will be opportunities for Secondary 1 students in G2 and G1 course to be eligible to take subjects at a more demanding level (MDL) if the student performs well during the course of the year.



Full Subject-Based Banding (Full SBB)

School-based assessment eligibility criteria for offering **English Language, Mathematics, Science** and **Mother Tongue Languages** at a more demanding level

Current subject level	School-based results	Option to offer subject starting from the next semester
G1	$\geq 75\%$ in the specific subject	G2
G2	$\geq 75\%$ in the specific subject	G3



ASSUMPTION
ENGLISH

Full Subject-Based Banding (Full SBB)

Beyond the start of S1, the eligibility criteria to take Humanities subjects at a more demanding level, will be at S2 Semester 1 are:

Current subject level	School-based results	Option to offer subject at
G1	$\geq 75\%$ overall in G1 English Language (or $\geq 50\%$ overall in G2 English Language) & A Pass with Distinction grade for both G1 Humanities (Social Studies component) Performance Tasks in Semesters 1 and 2	G2
G2	75% or higher in specific subject	G3



Blended Learning & Student Initiated Learning



ASSUMPTION
ENGLISH

Objectives of Blended Learning (BL)



Nurture self-directed and Independent learners



Develop passionate and motivated learners

Blended Learning Dates in Term 1

	BL DATES	WEEK	DAY
1	21 January 2025	3	Tuesday
2	10 February 2025	6	Monday
3	7 March 2025	9	Friday

51

Students will resume school on the next school day.

e.g. For BL on 21 Jan (Tue), students will report to school on 22 Jan (Wed).

How does BL look like in AES?

- ★ Mainly **asynchronous**
- ★ Follow **regular timetable** on each BL day and complete the assignments
- ★ Google spreadsheet, **go.gov.sg/aesblsec1** shows the lessons instructions for individual classes
- ★ Attend lessons in other MOE centres, CCA trainings or competitions, school activities like learning journeys



Nurture self-directed and Independent learners



ASSUMPTION
ENGLISH

Student Initiated Learning (SIL)



Develop passionate and motivated learners

On BL days, students initiate learning in interest

Theme	Curated theme for Sem 1: areas.	
Dinan	Appreciation of Music / Art (e.g. watch a musical and pen down reflections / learning)	Human Fraternity What are some of the valuable contribution of people in this area? How do these contribute to a culture of peace?

- SIL will be documented to build **students' personal e-portfolio** and for sharing / applying for higher education institutions.



ICT Support

For students without learning device or Internet access

- ★ Report to school as per normal (by 7.40 am) and go to the Library. Attendance will be taken.
- ★ Attire: School half Uniform

For students encountering technical issues

- ★ To reset your MIMS password, students may contact the ICT Team @ Staffroom (65729 130/164) or General Office (65729 100)
- ★ Alternatively, students may submit requests on this form (go.gov.sg/resetpwd).





ASSUMPTION
ENGLISH

Character and Citizenship Education in AES

CCE in AES - Montfortian Achievers' Programme (MAP)

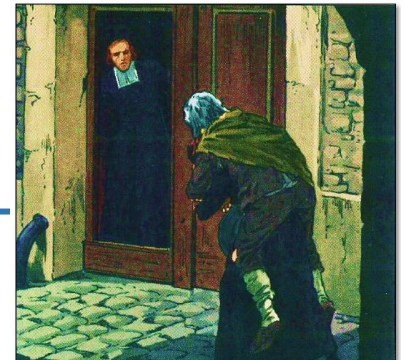
An unique CCE programme that integrates school's **CHRIST values education** with **teachings of Montfort**, so as to become persons of character and learning.

Montfortian Ethos

- Induction Lesson for Sec 1
- Common Practices (Morning prayer, Whole School Mass), Faith Alive for Catholic students
- Montfort's Stories for the learning of values that Montfort has exhibited (Sec 1 – Dinan, Sec 2 – Poitiers, Sec 3 – Poitiers, Sec 4/5 – Cesson)



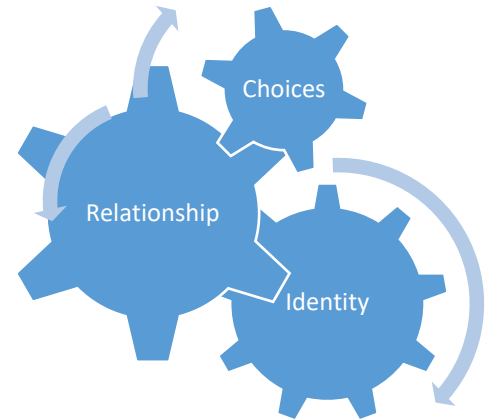
ASSUMPTION
ENGLISH



Sexuality Education in Secondary Schools

3 Big Ideas

These 3 big ideas, **Identity**, **Relationships** and **Choices**, are interconnected and impact one another.



Goals of Sexuality Education

- To help students make wise, responsible and informed decisions (**Choices**) through accurate, current and age-appropriate knowledge
- To help students know themselves (**Identity**) and build healthy and rewarding relationships (**Relationships**) through acquisition of social and emotional skills, such as self-awareness, empathy for others and decision making.
- To help students develop a moral compass, respect for themselves and others, premised on family as basic unit of society



ASSUMPTION
ENGLISH

Sexuality Education in AES

Sexuality Education in AES

- The SEd programme (carried out during MAP lesson) is a part of developmental journey of your child, helping him / her to navigate the changing environment and the challenges faced.
- However, the school respects the primary role that parents play in SEd of their child and may wish to opt out.

Sexuality Education Opt Out Form

- The parent letter on SEd Lessons will be sent on PG. Do read and acknowledge the school's SEd programme.
- If you would like your child to opt out of the programme, do click on the URL provided in the letter to complete the opt out form. **(If you do not wish to opt out, there is no need to fill up this form)**



Cyber Wellness in AES

Responsible Usage of technology for Learning

- Info-comm Technologies (ICT) are becoming increasingly important for education and communication. Hence, AES focuses on helping students to be responsible digital learners through 3 principles - **Respect for Self and Others, Safe and Responsible Use, and Positive Peer Influence.**

Use of “Digital Wellness” app to curb excessive screen time

- Most of the mobile devices can help us to manage our usage, by providing us with information such as average screen time, most used apps and come with functions to limit the usage.



Android
Devices



Apple
iOS
Devices



ASSUMPTION
ENGLISH

Parental Tips on Cyber Wellness

- To help your child stay safe having positive experiences online, you can:
 - Activate parental controls on your home devices
 - Model good digital habits for your child
 - Set ground rules for internet use
 - Navigate the internet together to understand their usage.

You may scan the QR code for more parental tips on CW:



Education and Career Guidance

By having a good understanding of their own values, interests, personality and skills, your child will be able to make an informed decision in deciding on their educational pathways.

Who am I?



Where do I want to go?



How do I get there?



Meet your friendly
ECG Counsellor:

Ms Audrey Chua

What is ECG?

Education and Career Guidance is part of your school's efforts to help you find out about your strengths, interests, values and purpose. You will learn how to plan for the next step in your education and, ultimately, your career, such as by selecting suitable courses.



How to book an appointment?

Scan the QR code or visit this link:

<https://for.edu.sg/ecgforassumptionknights>



Where to find more ECG resources?

<https://for.edu.sg/aesmapresources>

<https://for.edu.sg/myskillsfuturesec>